



TIPS From T.I.P.

Published By The T.I.P. Rural Electric Cooperative

OWNED BY THOSE WE SERVE

November 2024

Brooklyn, Iowa

Pole Top Rescue Review



Before all T.I.P. REC linemen take a turn practicing their pole top rescue skills they review the procedures.

Annually, the linemen review the procedures to rescue a fellow lineman who may have had electrical contact or who are in distress so that they are prepared to act if the situation arises.

Safety is a top priority at T.I.P. REC and our line crews will continue to review numerous safety procedures unique to the electric industry every year.



Sean Stutzman, Journeyman Lineman, is shown practicing his pole top rescue.

Senator Dawn Driscoll Visits T.I.P. REC



Pictured above back left to right: Directors Gene Von Ahsen, James De Smet, Randy Upah, Ronald Hoffman and Craig Stallman. Front left to right: Anne Axmear, CEO/General Manager, Scott Long, Senator Dawn Driscoll, Directors Jerry Henning and Lisa Tichy.

After discussing important issues with T.I.P. REC representatives, Senator Dawn Driscoll received a campaign donation from Iowa F.O.R.E. PAC (Friends of Rural Electrification Political Action Committee).



The employees and Board of Directors of T.I.P. REC wish you and your family a Blessed Thanksgiving.



Sustaining a Reliable Electric System

We've all heard the phrase, "Don't put all your eggs in one basket." This popular adage is often used in conversation or a story when someone is about to do something foolish or risky. If they heed this advice, it means they did not commit to "one basket", but instead hedged their bets with multiple options.

This strategy is how we describe T.I.P. REC's and our power supplier, Central Iowa Power Cooperative's (CIPCO), common sense approach to the current energy transition. As you can see to the right, CIPCO has a balanced portfolio of energy sources to provide the power our member-owners need and rely upon.

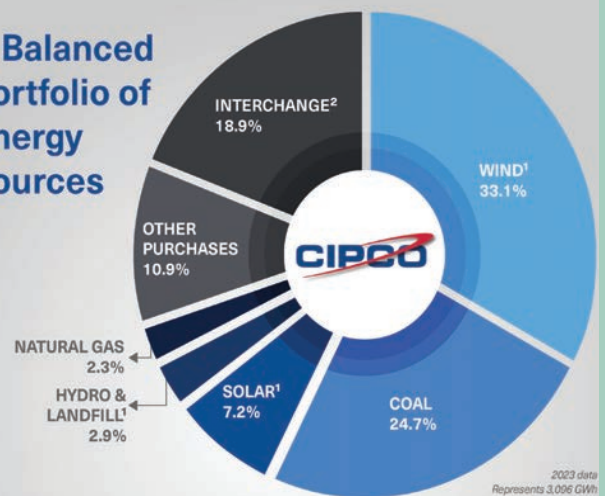
We know that our member-owners interest in renewable energy continues to grow. Recent innovations and advances in renewable energy technologies have led to sharp decreases in costs, making renewables more feasible, accessible and scalable. Nationally, there is increasing reliance on renewable energy sources at the same time that we're seeing fossil fuel plants taken off-line, often ahead of schedule. Additionally, we're seeing more pressure on the electric grid due to the increasing frequency and intensity of severe weather events and rising electricity demand.

So how do we reconcile these challenges of grid pressure and a changing fuel mix? Solar and wind energy are certainly beneficial for the environment, but they are limited resources because the sun does not always shine, and the wind does not always blow. Our primary responsibility is to provide electricity 24/7 to you, our member-owners. To do this, we need reliable sources of power that will meet **ALL** the peaks and valleys of on-demand energy in our connected world.

So where are we netting out? That's where our familiar adage comes into play. While utilization of renewables is increasing, we still need to incorporate other forms of energy in the mix to ensure reliable service. That's why we spread our eggs into multiple baskets. There is great value in maintaining a diverse mix of fuel sources - fossil fuels and renewables to ensure reliability, resiliency and meet the growing demand for electricity.

Reliability also means repairing and replacing utility equipment to prevent wear-and-tear, ensuring our equipment can withstand severe weather. We are focused on providing T.I.P. REC member-owners with reliable, affordable energy. That's why fuel diversity - or placing our eggs in multiple baskets - is essential to reliability.

A Balanced Portfolio of Energy Sources



As a 24/7 energy provider, Central Iowa Power Cooperative is able to meet its Member-owners' needs with a diverse fuel mix of coal, hydroelectric, wind, solar, landfill gas, natural gas and oil energy resources.

¹CIPCO invests in the development of renewable energy projects in several ways. We operate six small-scale solar arrays near communities we serve and retain the renewable energy certificates associated with each. We also contract with energy producers for the electricity output from wind, solar, hydro, and methane gas from a landfill (converted into electricity). CIPCO cannot claim these resources as renewable within our supply portfolio as we have either sold to third parties or do not receive the renewable attributes associated with the electricity produced from these renewable power sources. By selling these attributes (RECs), we not only support other organizations in meeting their renewable energy goals, we also generate revenue to help us lower our wholesale power rate to our 12 Member-owner distribution cooperatives and 15 municipalities.

²A percentage of market purchases exist within the portfolio to meet additional supply needs not covered by existing contracts or CIPCO-produced generation. Weather volatility and unplanned operational events at power plants may also impact market purchases.

T.I.P. REC Sends Aid to South Carolina After Hurricane Helene



Pictured above left to right is Sigourney Foreman, Shane Morse and Sigourney Journeyman Lineman, Tyler Hanson.

T.I.P. REC was proud to send two of our men to help restore power at Mid-Carolina Electric Cooperative in South Carolina after Hurricane Helene devastated their electric system in September.

We believe in the cooperative spirit and are glad we could come to the aid of our fellow cooperative.

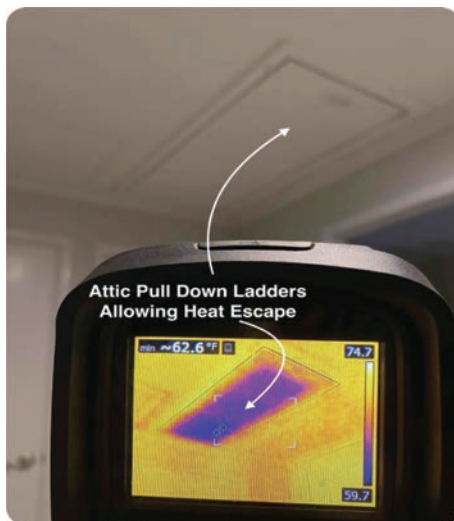
Energy Audit Helps Member-Owners Save Energy and Money

T.I.P. REC offers an infrared thermographic energy audit that can help our member-owners use electricity in a more efficient manner and help save money on their electric bill.

This type of energy audit offers an on-premise energy audit utilizing a third party vendor. This audit is done with the aid of thermography using infrared imaging displays to show heat patterns that allow the detection of problems that are not easily identifiable. Windows, doors, insulation levels and lighting are among other things that will be checked. This energy audit results in a very detailed report.

The cost to the member-owner for the above residential audit is \$175, with the cooperative picking up the remaining portion of the charges. Commercial energy audits are available but handled on an individual basis. You can schedule an energy audit by calling us at 800-934-7976.

If you are interested in a Do-It-Yourself energy assessment go to energy.gov/energysaver/home-energy-assessments.



Deck the Halls Safely



There's nothing like putting up lights and decorations to get you in the holiday spirit. It's something that many do each and every year without incident, yet the holidays are also one of the most hazardous times of the year when it comes to electrical fires and accidents.

Safe Electricity offers several tips as you deck the halls this season:

- When decorating outside, look up and around for power lines. Never throw lights or other decorations into trees near power lines.
- Keep ladders, equipment, and yourself at least ten feet from power lines.
- Match plugs with outlets. Do not force a three-pronged plug into a two-pronged outlet or extension cord.
- Outside, use only lights, cords, animated displays, and decorations rated for outdoor use. Follow the manufacturer's instructions on how to use them. Ensure outdoor outlets or extension cords are equipped with Ground Fault Circuit Interrupters (GFCI's).
- Never string more strands of lights together than recommended by the manufacturer.
- Do not staple or nail through light strings or electrical cords. Use plastic or insulated hooks to hang lights.
- Do not attached cords to utility poles.

The outside of your home is not the only place where you need to be cautious of electrical dangers. Use care when placing and decorating trees inside your home. Place fresh-cut and artificial trees away from heat sources such as registers, fireplaces, and radiators; water fresh-cut trees frequently. Turn lights off before you go to sleep. Use a timer to help.

T.I.P. REC wants you and your family to have a safe holiday season so please keep these decorating tips in mind.

Space Heater Safety Tips



Portable electric space heaters can be a convenient source of supplemental heat for your home in cold weather. Unfortunately, they can pose significant

fire and electric shock hazards if not used properly. Fire and electrical hazards can be caused by space heaters without adequate safety features, space heaters placed near combustibles, or space heaters that are improperly plugged in.

Safety should always be a top consideration when using space heaters. Here are some tips for keeping your home safe and warm when it's cold outside:

- Make sure your space heater has the label showing that it is listed by a recognized testing laboratory.
- Before using any space heater, read the manufacturer's instructions and warning labels carefully.
- Inspect heaters for cracked or broken plugs or loose connections before each use. If frayed, worn or damaged, do not use the heater.
- Never leave a space heater unattended. Turn it off when you're leaving a room or going to sleep, and don't let pets or children play too close to a space heater.
- Space heaters are only meant to provide supplemental heat and should never be used to warm bedding, cook food, dry clothing or thaw pipes.
- Install smoke alarms on every floor of your home and outside all sleeping areas and test them once a month.
- Proper placement of space heaters is critical. Heaters must be kept at least three feet away from anything that can burn, including papers, clothing and rugs.
- Locate space heaters out of high traffic areas and doorways where they may pose a tripping hazard.
- Plug space heaters directly into a wall outlet. Do not use an extension cord or power strip, which could overheat and result in a fire. Do not plug any other electrical devices into the same outlet as the heater.
- Place space heaters on level, flat surfaces. Never place heaters on cabinets, tables, furniture, or carpet, which can overheat and start a fire.
- Always unplug and safely store the heater when it is not in use.



Finishing up digging projects before winter? Go to IowaOneCall.com or call 1-800-292-8989 before you dig.



T.I.P. REC is proud to honor our board members and employee and all those who have served our country with courage, dedication and sacrifice. This Veterans Day, we salute you and thank you for protecting our freedom.

Your T.I.P. Board of Directors:

Jerry Henning, Hartwick President
Anne Axmear, North English Vice-President
Ronald Hoffman, Sigourney Sec'y-Treasurer
Randy Upah, Chelsea. Ass't Secretary
Gene Von Ahsen, Homestead. Director
Lisa Tichy, Montour. Director
James De Smet, Victor. Director
Craig Stallman, Williamsburg Director

NOTICE: The Brooklyn office will be closed on Wednesday, November 13 from 7:00 am till 1:00 pm for an all-employee safety meeting.

Pay Your Bill by Check, Debit or Credit Card. Log on to www.tiprec.com and Click on the blue Pay Now tab at the top or log into SmartHub or Call 833-619-0894.

Non-Discrimination Statement

“This institution is an equal opportunity provider and employer.”

TIPS from T.I.P. is published monthly for members of T.I.P. Rural Electric Cooperative, 320 Industrial Drive, Brooklyn, Iowa 52211.