



TIPS From T.I.P.

Published By The T.I.P. Rural Electric Cooperative

OWNED BY THOSE WE SERVE

June 2022

Brooklyn, Iowa

General Manager's Update

Rising Fuel Costs Bring Rising Power Cost



Dean A. Huls

Over the last several years your cooperative has benefited from wholesale purchase power cost trending downward. In my February update, I reported that our wholesale power cost went up 1.5 Mills/kWh in 2021 due to the polar vortex forcing Central Iowa Power Cooperative

(CIPCO), our wholesale power supplier, to administer an increase. Recently, we were notified by CIPCO that starting May 1, 2022, the cost of purchased power will be increasing by 2.5 Mills/kWh due to the rise in fuel costs. With this increase, we are still purchasing power cheaper than we were in 2018. As in the past, this increase will be absorbed through the Energy Cost Adjustment (ECA) which has been a negative since 2017. Wholesale power costs continue to make up our biggest expense. In 2021, more than 56.54 cents out of every dollar we spent went to the purchase of wholesale power. T.I.P REC joins together with CIPCO to benefit from reliable, low-cost wholesale power enabling us to balance rising costs for our member-owners. Like other local businesses, we've been negatively impacted by the rapid rise in the cost of goods and services. Everything from poles and wire to our contracted maintenance programs have increased in price. Your board of directors is well informed about rising material costs and the general cost of doing business, which continues to increase. However, at the end of the day electricity still remains a good value.

In February, I also reported that we would be doing a Cost-of-Service Study (COSS) with a consultant in 2023. The purpose of this study is to help us correctly identify costs by rate class, ensuring that established rates will generate sufficient revenues to support the cooperative's operations. T.I.P was recently notified by our consultant that we have been moved up in the queue and they will be doing our COSS in 2022. By doing this COSS in 2022, it will enable your cooperative to better align with the rate structure that CIPCO will be implementing in January of 2024. This fall we will be reporting the results of this study to you, the membership. Your cooperative strives to be proactive instead of reactive in the fast-changing times we live in today. We are always looking for ways to maintain our solid financial performance.

A friendly reminder to attend your in-person Annual

Meeting being held on Saturday, August 27. Bring your family to enjoy the free breakfast and attend the business meeting. Don't miss out on your opportunity to win free prizes!

In closing, I would like to thank you, the membership, for your support of this great cooperative. Our goal at T.I.P. REC is to always provide our member-owners with safe, reliable, and environmentally friendly electricity.

Have a Safe Summer!

Please Help Us Find Director Nominees for the August Annual Meeting

The following nominating committee has been appointed to find candidates to run for your Board of Directors at your August 27, 2022, annual meeting. This year directors will be elected from the following counties: **Iowa, Keokuk and Tama.**

If you are a co-op member and have a member whom you would like to have nominated for director, contact any of the members on your nominating committee listed below.

Nominating Committee Members are:

Iowa County:

Bruce Heitshusen 2033 T Ave. South Amana, IA 52334 319-430-8297	Dennis Kempf 3160 240th St. Williamsburg, IA 52361 319-325-3413
---	---

Keokuk County

Davis Axmear 15382 190th Ave. Keswick, IA 50136 319-330-0363	Matt Collins 16489 160th Ave. What Cheer, IA 50268 641-660-1175
--	---

Tama County:

Daniel L. Anderson 1640 370th St. Tama, IA 52339 641-750-2430	Jim Anderson 1637 370th St. Tama, IA 52339 641-750-0182
---	---

Nominees' names must be given to any nominating committee member **before Monday, June 27, 2022.** We appreciate your help in the election process.

A Touchstone Energy® Cooperative



T.I.P. Rural Electric Cooperative Awards Scholarships

This year T.I.P. Rural Electric Cooperative awarded scholarships to recognize academic and community achievements made by the young adults in the communities we serve. T.I.P. REC takes pride in helping develop leaders in our communities and these scholarships are considered an investment in the economic future of rural areas.

T.I.P. Rural Electric Cooperative accepted scholarship applications from graduating seniors whose parents/guardians are members of T.I.P. REC.

The following are the high school seniors who were awarded \$500 scholarships:

Belle Plaine Jr/Sr High School



Benjamin De Meulenaere
Central College, Business

English Valleys Jr/Sr High School



Kaeley Axmear
Iowa State University,
Animal Science



Green Mountain Garwin High School
Jenna Yilek
Hawkeye Community College, Physical Therapy

BGM Jr/Sr High School



Joseph Irlbeck
University of Iowa, Health & Human Physiology:
Exercise Science

HLV Community School



Rochelle Thys
Iowa State University,
Electrical Engineering

Iowa Valley Jr/Sr High School



Jaden Smith
Central College
Biology

Pekin Community High School



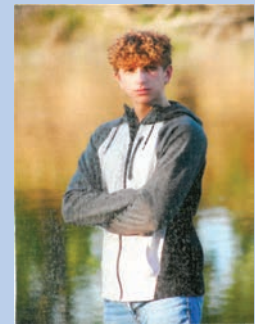
Taylor Gambell
Des Moines Area Community College,
Animal Science

Keota Jr/Sr High School



Drew Sieren
Kirkwood Community College, Agricultural Sciences

South Tama County High School



Eric Henry
University of Northern Iowa, Business Management

Williamsburg Jr/Sr High School



Kendra Eichhorn
Iowa State University
Genetics

Installing a New Grain Bin?

The State of Iowa requires specific clearances for electric lines around grain bins. T.I.P. Rural Electric Cooperative will provide assistance in planning for a safe environment for everyone working and living around grain bins.

The diagrams shown are according to the Iowa Electric Safety Code found in Iowa Administrative Code Chapter 199-25.2(3)b. An electric utility may refuse to provide electric service to any grain bin built near an existing electric line which does not provide the clearances required by the American National Standards Institute (ANSI) C2-2017, "National Electric Safety Code", Rule 234F. This paragraph "b" shall apply only to grain bins loaded by portable augers, conveyors or elevators and built after September 9, 1992, or to grain bins loaded by permanently installed augers, conveyors, or elevator systems installed after December 24, 1997. (As adopted by the Iowa Utilities Board).

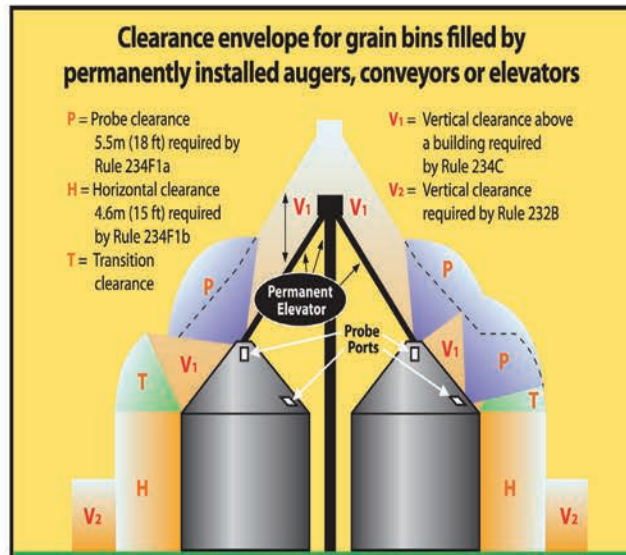
T.I.P. and its power supplier, Central Iowa Power Cooperative, are required by the Iowa Utilities Board to provide this annual notice to farmers, farm lenders, grain bin merchants, and city and county zoning officials. If you have any questions concerning any clearance regulations, please call T.I.P. Rural Electric Cooperative at (800) 934-7976 before any new grain bin plans are finalized. For your safety, T.I.P. standards exceeds those specified in NESC.



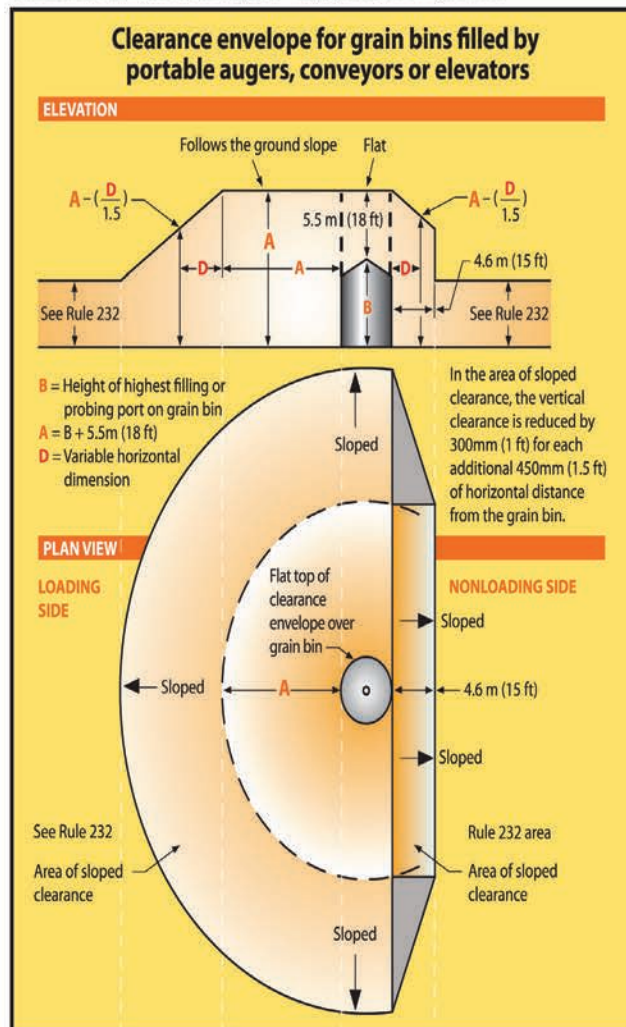
Pool Clearances

When installing a pool, clearance in any direction from the water level, edge of a pool, base of diving platform, or anchored raft is required by (ANSI) C2-2012, "National Electric Safety Code", Rule T-234-3.

If you have any questions, please call us at (800) 934-7976 before any new pool plans are finalized.



From IEEE Std. C2-2017, "National Electrical Safety Code." © Copyright 2016 by IEEE. All rights reserved.



From IEEE Std. C2-2017, "National Electrical Safety Code." © Copyright 2016 by IEEE. All rights reserved. The IEEE disclaims any responsibility or liability resulting from the placement and use in the described manner.

Are You Ready to Serve on Your Board of Directors?

When John F. Kennedy gave his inaugural speech and spoke his famous words, “Ask not what your country can do for you, ask what you can do for your country” his inspiring words urged Americans to take actions that benefited the greater good. Basically, Kennedy was saying our country thrives when we all contribute our talents to the common good.

On a smaller scale, the same can be said about your co-op, specifically with regard to our board members. T.I.P. Rural Electric Cooperative’s board members are community-minded individuals with a variety of skill sets. We rely on their many talents to help make informed decisions on long-term priorities and investments. Our directors live and work right here in the co-op’s service area, and we consider them the eyes and ears of the communities because they provide their perspective on important community issues.

Your co-op recognizes that it takes many people with different skills to create a well-rounded board that can represent the full spectrum of our communities. That’s why when we’re seeking new directors, we want individuals with diverse perspectives, experience, expertise and views. We’re seeking local members of our communities who can apply their unique talents to benefit all the member-owners. But above all else, we’re looking for individuals who love their communities and want to see them thrive now and in the future.

Serving on T.I.P. REC’s board means you’re making a difference locally. While day-to-day decisions are made by co-op staff, major decisions are made by the board, whose mission is to look out for the vitality of the co-op.

T.I.P. REC’s board elections will be held during the Annual Meeting on Saturday, August 27. One director will be elected from each of the three counties: Iowa, Keokuk and Tama.

While you don’t need to be an expert in electricity or business to run, you do need to have a willingness to actively serve and learn. Our board meets monthly, and we offer specialized training opportunities to help board members make informed decisions. Board members gain a deeper understanding of the electric utility industry, the cooperative business model and local economic development efforts.

To learn more about T.I.P. REC’s director election process go to www.tiprec.com/board-directors and look at the information at the bottom of the page.

We hope you’ll consider running for a board position.

Shine the Light Contest

Nominate a local volunteer in June and they could win \$2,000 for their charity!



IowaShineTheLight.com



Energy Efficiency Tip of the Month

If you’re looking to add smart technology to your home, consider smart plugs. Smart plugs are inexpensive and can be used to control lighting and other electronic devices through a smart phone app.

With smart plugs, you can conveniently manage lighting, home office equipment, video game consoles and more. By powering off unused devices when you’re away, you can save energy and money!



NOTICE: Your REC office will be closed Monday, July 4th. Have a safe holiday!

NOTICE: The Brooklyn office will be closed on Tuesday, June 7 from 7:00 am till early afternoon and Thursday, June 16 from 7:00 a.m. till Noon for all-employee meetings.

Pay Your Bill by Check, Debit or Credit Card. Log on to www.tiprec.com and Click on the blue Pay Now tab at the top or log into SmartHub or Call 888-999-0275.

TIPS from T.I.P. is published monthly for members of T.I.P. Rural Electric Cooperative, 612 W. Des Moines St., Brooklyn, Iowa 52211.